

BERGER
P A I N T S



royale

Play

Italian Stucco

DESIGNER MARBLE FINISH



Scarlet Sumac 8077



Royale Play Italian Stucco

Simplicity is the ultimate sophistication.
- Leonardo Da Vinci

Presenting, Royale Play Italian Stucco from Berger Paints. A range so exquisite and desirable which absolutely transforms your home. Choose between 5 tasteful patterns (Marble, Quartz, Igneous, Cobbled & Slate) each inspired by a different stone to create unique backdrops. Italian Stucco is putty like material which gives marble or natural stone finish. Bring the sophistication of historic palaces and royalty into your life. For now you can choose from a variety of colours from our extensive range. The colour palette available is exhaustive and includes shades from all the major colour families.

Italian stucco

DESIGNER MARBLE FINISH

Royale Play Italian Stucco from Berger Paints, a unique marble finish paint reminiscent of Italian architecture. Its brilliant shades and unmatched smooth texture come with a promise to turn the walls into the centre of your home's interiors.

Apoliodorus 8473



Spring of Sage 7826

Italian stucco
DESIGNER MARBLE FINISH

Aqua Marine 7454



Italian stucco QUARTZ

Prismatic and mystical, the **Quartz** range is synonymous with magnificent décor. Born of precise crafting, an effect that's as easy to apply as it is to appreciate, it conjures some rather engaging walls.



Blue Horizon 8272

Italian stucco IGNEOUS

Inspired from the metamorphosis of volcanoes, comes something as breathtaking. Presenting the **Igneous** effect. Right from the first touch, its aura is ever-increasing, giving grandeur a whole new meaning.



Early Bloom 9408

Balsam Brown
8520

Italian stucco COBBLED

Inspired by the river bed, the **Cobbled** effect lends an unmatched dynamism to any home's interiors. With the power to transform even the most placid wall into a work of art, it gives it a waterfall-like effervescence, bringing back strong memories of the Renaissance.

Green Mile 7778



Terra Verde 7822

Italian stucco SLATE

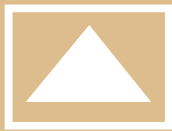
Smooth as a **Slate**, this texture is everything its name suggests. Slick and awe-inspiring, this effect replicates the splendour of European palaces. With its palette of soothing tones that further help you create a restful haven for yourself, it is impressive to behold, and equally smooth to touch.

Southwest Spirit 8638



Gardening Girl 7559

NEUTRALS



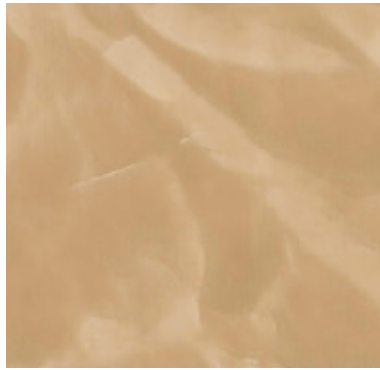
Bare Necessity OW 137



Limestone Ridge 8531



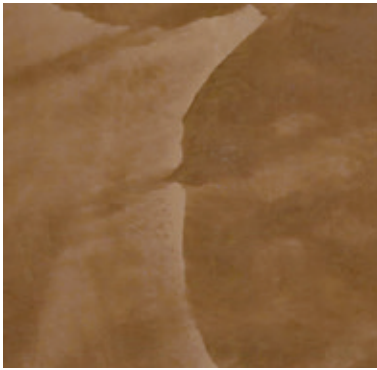
Soothing Silk 9531



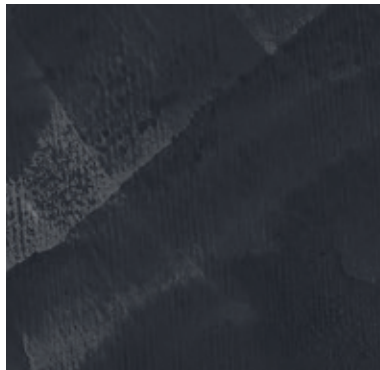
Star of the Garden 8529



Apollodorus 8473



Latte Please 8549



Stone Age 8288



YELLOW
ORANGES



Lemon Burst 7864



Burnished Sun 7919



Firefly Glow 7950



Bright'n Shiny AC109



Bright Lily 7941



Haley's Comet 7973



Autumn Beauty 7966



Citrus Sherbet 7968



Shades are shown for indication purpose only. Visit a Berger Paints dealer for actual shade reference.

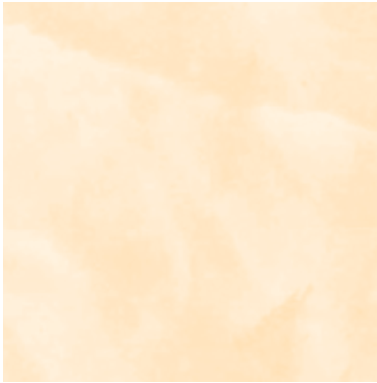
Shades are shown for indication purpose only. Visit a Berger Paints dealer for actual shade reference.



REDS



Prelude to pink 8699



Day Fresh 9403



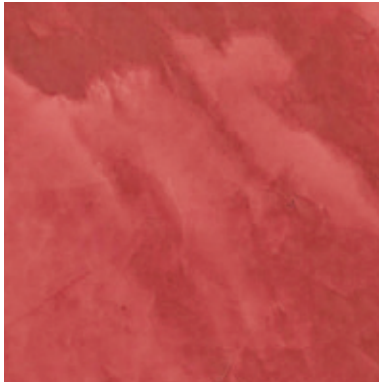
Wasaga Beach 8618



Tuscan Trail 8673



Raw Melon 9399



Scarlet Sumac 8077



Southwest Spirit 8638



Red Baron 8085



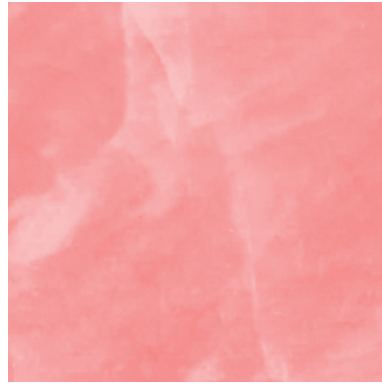
Shades are shown for indication purpose only. Visit a Berger Paints dealer for actual shade reference.



PINKS



Pristine Pink 9130



Early Bloom 9408



Karen's Kiss 8127



Raisa 8134



May Fair 8078



Australian Coral 8046

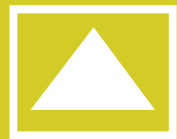


Pink Silk 9413



Shades are shown for indication purpose only. Visit a Berger Paints dealer for actual shade reference.

LIME
GREENS



Banana Cream

7850



Meadow Marsh

7825



Terra Verde

7822



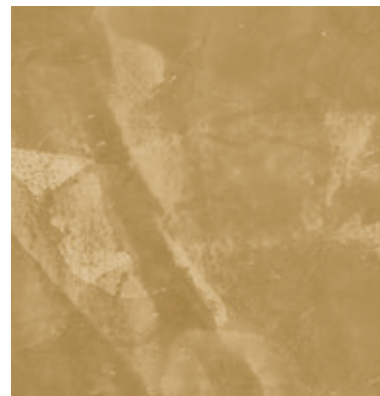
Garden Element

7838



Slip into Sunset

7878



Wood riff

8510



Lick Of Lime

7711

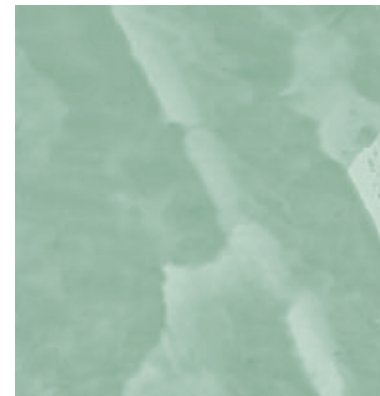


Burst Of Lime

7742



GREENS



Spinney Mountain

8388



Garden Soft Green

7571



Peace Park

9273



Green Melody

9328



Summer Sumac

7606



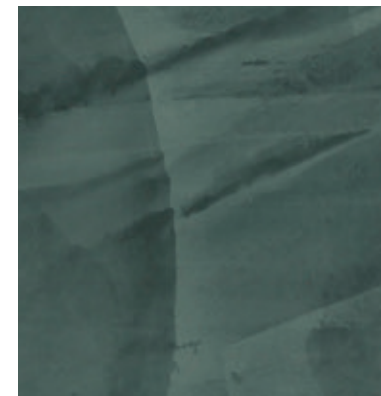
Time to Grow

7526



Green Mountain Falls

7469



Waterstone

9477



Shades are shown for indication purpose only. Visit a Berger Paints dealer for actual shade reference.

Shades are shown for indication purpose only. Visit a Berger Paints dealer for actual shade reference.



BLUES



Cloud Blue

9170



Aqua Young

9207



True Sky Blue

7407



Navajo Turquoise

7438



Aqua Marine

7454



Royal Regatta

7247



Ahoy! Blue

AC147



BLUE
GREYS



Beecher Falls

7305



Blue Horizon

8272



Aquavit

7456



Turquoise Trick

7472



Rustic Twist

9255



Classic Cyan

9230



Stormy Sky

9181



Shades are shown for indication purpose only. Visit a Berger Paints dealer for actual shade reference.

Shades are shown for indication purpose only. Visit a Berger Paints dealer for actual shade reference.



PURPLE



Breezer

9138



Purple Plains

9577



Flowing Silk

9560



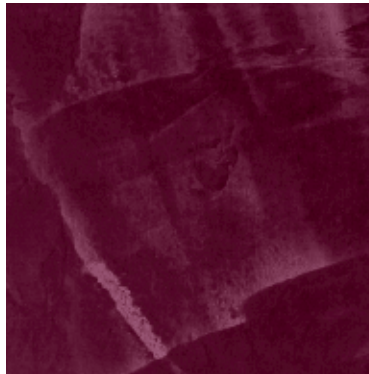
Regal Jewel

7150



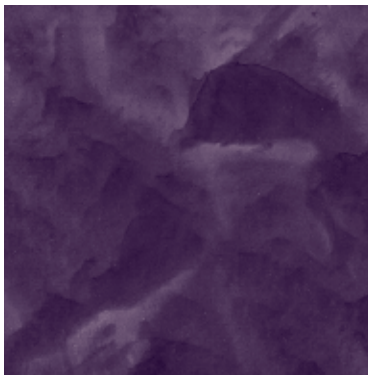
Poppy Seed

9125



Cherry Bon Bon

AC135



So Merlot

8197



Shades are shown for indication purpose only. Visit a Berger Paints dealer for actual shade reference.

Before you begin

Luxury takes a step further with Royale Play Italian Stucco. Its exquisite marble finish adds an incomparable magnificence to your home's decor. Get ready to be soaked in adulation as your walls create myriad breathtaking textures on your walls.

You will need

- Well prepared surface (primer + stucco)
- Berger Paints Royale Matt / Superflat
- Berger Paints Royale Play Italian Stucco
- Masking tape
- Italian Stucco Trowel & Scraper
- Soft absorbent cloth
- Emery paper 180, 320 and 1000

Standard practice to be followed

Surface preparation :

- Evaluate the surface for seepages, cracks, dampness, fungal growth or blisters in the walls before starting the painting process.
- Complete care should be taken to ensure proper surface preparation (Primer + Stucco) and a smooth, non-absorbent surface must be prepared before applying the base coat.

Application Procedure

Stucco (Marble Effect)

- Apply the first coat of Italian Stucco using trowel and ensure proper cover age. After the first coat has dried, sand lightly using emery paper 320 to ensure the surface is even.
- Apply second coat of Italian Stucco using the trowel in random manner to create dessired pattern on the wall. Let it dry before sanding lightly using emery paper 320.
- Apply final coat of Italian Stucco randomly on 3x3 patches using trowel. Buff the surface after each patch is complete to get desired gloss level. Wipe clean using a muslin cloth after completing the wall.

To create the Quartz effect, the Italian Stucco material is applied in slant lines in manageable section in 2 coats, after which the surface is buffed to get the desired gloss. Ingneous is created using cotton cloth on wet Italian stucco application in 2 coats. To create rough Cobbled effect, deposit material in rough patches and then flatten after drying for 10 minutes. Finally the Slate effect is created in 2 coats using the trowel. The material is applied in vertical brick-like pattern.

Things to remember

- Italian Stucco and the other variants are applied randomly. Therefore, each wall will be unique.
- Always stand back and observe the wall at regular intervals while creating the effect to give it the right artistic finish.



BERGER
P A I N T S

BAHRAIN +973 17 123700 OMAN +968 24 596709 UAE +97143391000

For more information, log on to <http://www.bergeronline.com/gcc>

No part of this book may be reproduced or copied in any form or by any means (graphics, electronic or mechanical, including photocopying, recording, taping or information storage retrieval system) or reproduced, in any disc, tape, perforated media or other information storage device etc. without the written permission of Berger Paints Limited. All rights reserved. Copyright Berger Paints Limited.