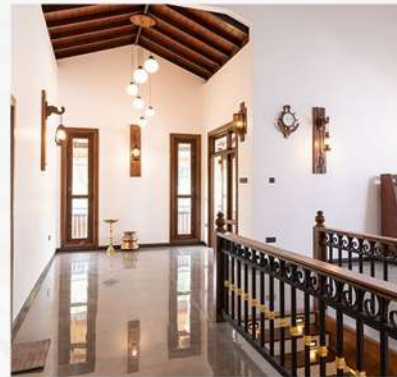




# asianpaints

## CAUSEWAY



# *Paint It Easy Guide*

# INTRODUCTION

Asian Paints Causeway was formed in 2017 with the merger of the global giant Asian Paints Group and Sri Lanka's leading paint company, Causeway Paints Lanka (Pvt) Ltd carrying years of understanding of Sri Lankan market, thus creating the #1 paint company in the country.

Beyond just delivering world class products for your decor & waterproofing needs, we strive to become the trusted partner in creating your beautiful dream home.

Asian Paints Causeway adds colours to your world and also brings a host of services to give you a unique and seamless experience:

Be it our **Warranty-Backed Products** to offer you complete peace of mind or the **Instant Colour Help** to assist you in visualizing your home in the world of colour or assist you in calculating the cost of painting through our **Paint Budget Calculator**.

We also have a team of **Trained & Certified Painters** who can help you in the painting process or a professional, hassle-free painting service through our **Safe Painting Service**, and many more services to give you assured and convenient options for creating your beautiful home.

This **Paint It Easy Guide** will give you a glance of how you can make the best decisions for your beautiful home that is a reflection of you. The guide hand-holds you through the end-to-end painting journey. Right from the colour selection to post-painting protection.

Come and experience the world of Asian Paints Causeway, your trusted partner in creating a vibrant future.



# INTERIOR



Scan for  
More Information



Blushing Rose  
5117



Hacienda Clay  
7936



Mauve Mix  
9438



Brown Sugar  
8582

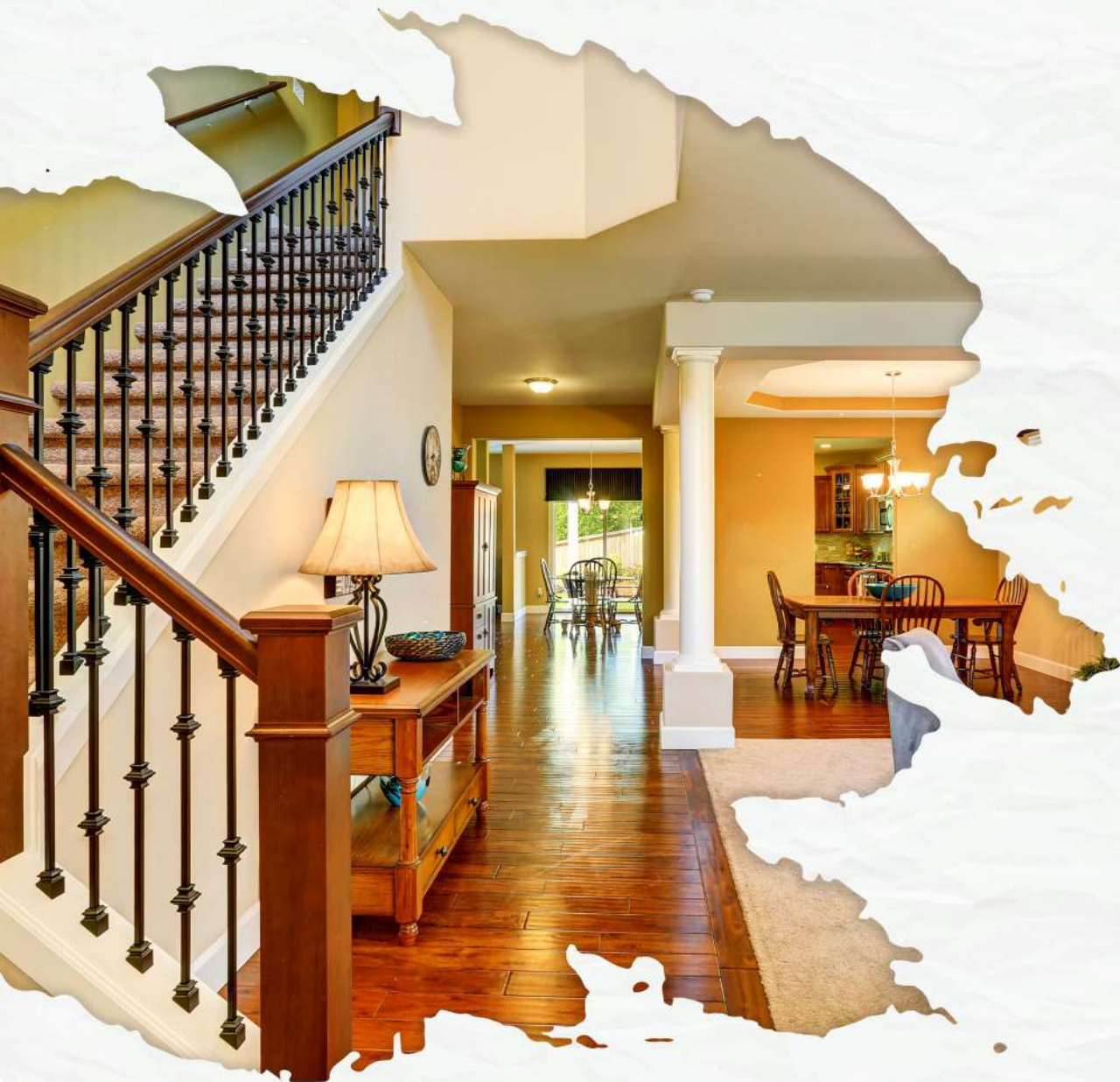


Sunderbans  
8519



Sky Dark  
9472

# INTERIOR



## TIPS & GUIDELINES FOR PAINTING

These tips & guidelines will help you get started on painting your home, the right way. These are divided into 3 parts:

PRE-PAINTING  
DURING PAINTING  
POST-PAINTING

# PRE-PAINTING: INTERIOR SURFACE

Want to know secret to a great looking interior wall? It's the surface. A well-prepared surface helps bring the best out of your interior paints or textures. Here's how you prepare it:

## Repainting



### Remove your old paint

Start by using a wire brush to remove loose dust particles and to scrape off the old paint completely.



### Check for Dampness

See wet & discolored patches on walls? These are sure shot signs of dampness. Bought upon by water leakages from internal drain pipes, bathroom tiles and rainwater seepage through exterior walls or terraces, dampness can lead to a variety of paint defects.



### Treat Dampness

The dampness can be treated by using Asian Paints waterproofing range as per the defects visible in the interior walls.



## Fresh Painting

### Wall Curing & Cleaning

In case the surface is being painted for the first time, make sure that the curing has been done minimum for 12-15 days and the surface is cleaned properly.

### PROBLEMS

- Blistering** : Appearance of boils on the surface.  
**Peeling/Flaking** : Detachment of paint film from the surface (papdi formation)

### SOLUTION:

To keep your interior wall intact, ensure your exterior wall is properly plastered and waterproofed. In case a problem arises, the surface can be checked on the exterior for any dampness issues. It can be solved with Damp Seal. If the issues is because of interior moisture, then use DB2K



# DURING PAINTING

Painting your home can be completely hassle-free with the right planning. Read on to find out how to carry out the perfect painting job. Also, learn how to increase the life of your paint.

- Follow the Directions for Use at the back of the packaging for a successful painting process.
- See the Directions for Use at the back of the product for exact dilution and drying time.
- Make sure that the number of coats being applied is as per the specifications mentioned on the back of the packaging.
- All the furniture and flooring should be covered well before the painting work starts.
- For the best performance of the top coat, insist on the recommended number of primer & top coats.
- In case of any confusion, kindly reach out to your nearest dealer



# POST-PAINTING

A good painting job will make your home come alive. But to hold on to its beauty for a longer period, a little maintenance is needed. Here are some tips that can help you maintain the beauty of your walls.



Always keep the walls clean & fresh. Clean stains with soft cloth soaked in mild detergent.



The hot sun can cause enamel paint of your windows, doors and grills to lose its gloss. Apply a fresh coat when needed.



Avoid dragging your furniture along with interior walls. This not only damages the paint but also the putty layer.



Employ a civil contractor to check wear and tear and fix cracks from time to time.



Ensure all plumbing leaks are sealed and there are no internal leaking pipes to avoid moist exterior/interior and algae growth.



To minimize permanent or difficult-to-remove stains, clean walls immediately before the stains dry up.



# WALL PAINT RANGE



**Finish** : High Sheen  
**Coverage** : 22-24 SQM/L  
**Warranty** : 03 years Bacteria Killing Warranty

**Shade Range** : 1792

## Key USPs

- ▶ Kills 99.9% Bacteria
- ▶ Tested TUV SUD, Singapore
- ▶ Purifies Air
- ▶ Powered by Encapsulated Nano Technology

## Royale Health Shield



**Finish** : Super Sheen  
**Coverage** : 18-20 SQM/L  
**Warranty** : 05 years Sheen Stay Warranty  
10 years Performance Warranty

**Shade Range** : 1793

## Key USPs

- ▶ Unmatched Stain Resistance
- ▶ Lumino-Tech™
- ▶ Brightest Colours
- ▶ Total Opacity
- ▶ Beautiful Finish

## Royale Shyne



**Finish** : Soft Sheen  
**Coverage** : 22-24 SQM/L  
**Warranty** : 05 years Washability Warranty

**Shade Range** : 1753

## Key USPs

- ▶ Stain On-Stain Off Technology
- ▶ Colour Stay Technology

## Royale Smart Clean



**Finish** : Rich Matt  
**Coverage** : 20-22 SQM/L  
**Warranty** : 05 years Performance Warranty

**Shade Range** : 1766

## Key USPs

- ▶ Brightest White & Colours
- ▶ Easy Clean

## Classique Rich Matt

# WALL PAINT RANGE



**Finish** : Soft Sheen  
**Coverage** : 20-22 SQM/L  
**Warranty** : 05 years Performance Warranty

**Shade Range** : 1774

## Key USPs

- ▶ Purest White & Colours
- ▶ Easy Clean

## Classique GLO



**Finish** : Matt  
**Coverage** : 18-20 SQM/L  
**Warranty** : 03 years Performance Warranty

**Shade Range** : 1649

## Key USPs

- ▶ Excellent Hiding
- ▶ Excellent Coverage
- ▶ Colour Stay Technology

## Apcolite



**Finish** : Matt  
**Coverage** : 14-17 SQM/L

**Shade Range** : 15 Direct Shades

## Key USPs

- ▶ Best-in-class Hiding
- ▶ Vibrant Colours
- ▶ Best-in-class Coverage

## Choice



**Finish** : Matt  
**Coverage** : 12-15 SQM/L

**Shade Range** : 15 Direct Shades

## Key USPs

- ▶ 2 Coat Hiding
- ▶ Higher Coverage
- ▶ Easy Application

## Uthsava

# WATERPROOFING

## INTERIOR

Damp walls, cracks and patches ruin the beauty of your home and getting them fixed is a daunting task. Our trained experts identify and help solve the problem via application of specialised preventive and curative products.



# WATERPROOFING PRODUCT RANGE

INTERIOR

Surface: **Bathrooms/Wet Areas**

## Usage

**Efflorescence**  
A formation of a powdery or crystalline deposit on or underneath the surface of various types of masonry. It also prevents water seepage and dampness under tiles and slabs in wet areas.

## Benefits

- ▶ Resistance to high water pressure
- ▶ 3 year Waterproofing and Anti-Efflorescence warranty
- ▶ Positive and negative waterproofing
- ▶ 100% Elongation
- ▶ Suitable for swimming pools & sunken tank
- ▶ Strong Adhesion



Surface: **Interior/Exterior**

## Usage

In cracks up to 3mm on the cement surface

## Benefits

- ▶ Crack filling ability
- ▶ Flexibility
- ▶ Strong Adhesion
- ▶ Mechanical Strength





Scan for  
More Information

### Accent



Prussian Blue  
7341



Choco Fudge  
9542



On the Banks  
9479

### Base Color



Nickel Grey  
6126



Barsa Pearl N  
0974



Swiss Coffee  
4215

# EXTERIOR

# EXTERIOR



## Accent



Frosted Chocolate  
8654



Terracotta  
0427



Silent Night  
8254

## Base Color



Sisal Mat  
7890



Herbal Pack  
8602



Sand bed  
7980



## TIPS & GUIDELINES FOR PAINTING

These tips & guidelines will help you get started on painting your home, the right way. These are divided into 3 parts:

PRE-PAINTING  
DURING PAINTING  
POST-PAINTING

# PRE-PAINTING : EXTERIOR SURFACE

There's a lot you expect from your surfaces. It has to look good but also should be able to withstand extreme weather conditions. This is why, you need to prepare your exterior surface well before paint application.

## Repainting



### Remove old paint & algae

After removing old dust particles and old paint, check for ugly green or black patches on the walls. These indicate algae growth. Wire brush affected area and apply SmartCare Bio Block.



### Check for dampness

During heavy rains your exterior walls become prime cause of dampness at home. Water seeping in through exterior walls lead to variety of defects such as:



### Wall Curing & Cleaning

In case the surface is being painted for the first time, make sure that the curing has been done minimum for 12-15 days and the surface is cleaned properly.



## Fresh Painting

### PROBLEMS

**Blistering:** Appearance of boils on the surface  
**Peeling/Flaking:** Detachment of paint film from the surface (papdi formation)

### SOLUTION FOR DAMPNES:

Treat the exterior wall surfaces from where water is seeping in with recommended coats of Asian Paints of Damp Proof.

### ADVANTAGES OF DAMP PROOF:

**Waterproofing :** Positive hydrostatic pressure does allow the water to seep in.  
**Crack Bridging :** It has the ability to bridge surface cracks up to 0.8mm  
**Easy usage :** It comes in a single pack that's ready to use



# DURING PAINTING

Painting your home can be completely hassle-free with the right planning. Read on to find out how to carry out the perfect painting job. Also, learn how to increase the life of your paint.

- Follow the Directions for Use at the back of the packaging for a successful painting process.
- See the Directions for Use at the back of the product for exact dilution and drying time.
- Make sure that the number of coats being applied is as per the specifications mentioned on the back of the packaging.
- For the best performance of the top coat, insist on the recommended number of primer & top coats.
- In case of any confusion, kindly reach out to your nearest dealer



# POST-PAINTING

A good painting job will make your home come alive. But to hold on to its beauty for a longer period, a little maintenance is needed. Here are some tips that can help you maintain the beauty of your walls.



Employ a civil contractor to check wear and tear and fix cracks from time to time.



Ensure all plumbing leaks are sealed and there are no internal leaking pipes to avoid moist exterior/interior and algae growth.

# EXTERIOR COMMON PROBLEMS

## Surface: Terrace and Dead wall

### Problem

Dead wall leakage  
Due to extreme weather conditions, external structures can bear the brunt which could result in cracks, leakages and seepages.

### Solution

Dodge the problem of unwanted leakage from terrace with DPFT

### Benefits



- ▶ Ultimate waterproofing for terrace and blind wall
- ▶ Heat Proofing
- ▶ 8 year positive waterproofing warranty
- ▶ 2mm Crack Bridging
- ▶ European Fiber Technology
- ▶ Resist up to 7 bar of hydrostatic pressure
- ▶ Highest whiteness and hiding
- ▶ Resistance to foot traffic

## Surface: Exterior

### Problem

Dampness  
Flaking paint from the walls and the ceiling is known as dampness.

### Solution

Protect your exterior walls from dampness & algae with SMARTCARE AQUA SAFE

### Benefits



- ▶ Anti Dirt Pickup
- ▶ Algae resistance
- ▶ 600 shades available
- ▶ 2x Elongation
- ▶ Self Priming
- ▶ 3 year waterproofing and performance warranty

# WALL PAINT RANGE



Apex Ultima

**Finish** : High Sheen  
**Coverage** : 18 - 20 SQM/L  
**Warranty** : 7 years Performance

**Shade Range:** 1732

## Key USPs

- ▶ Sea Breeze Shield
- ▶ Sun Proof, Dirt Resistance
- ▶ Algae Resistant



Apex Shield

**Finish** : Soft Sheen  
**Coverage** : 15 - SQM/L  
**Warranty** : 5 years Performance

**Shade Range:** 1656

## Key USPs

- ▶ UV Resistant
- ▶ Algae Resistant
- ▶ Dirt Resistant



Ace

**Finish** : Soft Sheen  
**Coverage** : 12 SQM/L  
**Warranty** : 3 years Performance

**Shade Range:** 1598

## Key USPs

- ▶ Algae Resistant
- ▶ Anti-Fungal Shield
- ▶ Best-in-class coverage

EXTERIOR

# WATERPROOFING EXTERIOR

Damp walls, cracks and patches ruin the beauty of your home and getting them fixed is a daunting task. Our trained experts identify and help solve the problem via application of specialised preventive and curative products.



# WATERPROOFING PRODUCT RANGE

EXTERIOR



## Dampblock 2k

### Problem

Terrace leakage

**Surface** : Interior/ Exterior wet areas

**Warranty** : 5 year waterproofing & 3 year Anti-efflorescence

### Key USPs/Benefits

- ▶ Positive and negative waterproofing
- ▶ 100% elongation
- ▶ Resist up to 5 bar of water pressure
- ▶ Suitable for swimming pool and water tank
- ▶ Easy application
- ▶ Works on all masonry surfaces including bathroom



## AquaSafe

### Problem

Exterior painting with waterproofing

**Surface** : Exterior

**Warranty** : 3 year Positive Waterproofing

### Key USPs/Benefits

- ▶ Dirt Resistance
- ▶ Algae and Fungal resistance
- ▶ 2x superior elongation
- ▶ Self Priming
- ▶ Wide range of colours



## Damp Seal

### Problem

Blistered wall, dark colour wall undercoating, waterproofing undercoat for exterior walls

**Surface** : Exterior

**Warranty** : 3 year Positive Waterproofing

### Key USPs/Benefits

- ▶ Waterproofing protection up to 3 years
- ▶ Fiber reinforcement
- ▶ 150% elongation and crack bridging ability
- ▶ Anti blistering property
- ▶ Increase top coat coverage by 30%
- ▶ One coat system



## Repair Polymer

### Problem

Bonding on old concrete to new concrete, cracks on the plaster

**Surface** : In Cement

**Warranty** : N/A

### Key USPs/Benefits

- ▶ Reduced Shrinkage
- ▶ For Bonding Coat

# WATERPROOFING PRODUCT RANGE

EXTERIOR



## Problem

Water rise/seepage from ground water and terrace through concrete structures

Surface : In Cement

Warranty : N/A

## Key USPs/Benefits

- ▶ Integral waterproofing
- ▶ Superior compressive strength
- ▶ Easy workability

### Vitalia Neo



## Problem

Cracks up to 3mm on the cement surface

Surface : Basement

Warranty : N/A

## Key USPs/Benefits

- ▶ Crack filling ability
- ▶ Flexibility
- ▶ Adhesion
- ▶ Mechanical strength

### Crack Seal



## Problem

Leakage on terrace, roof top, blind walls

Surface : Terrace

Warranty : 8 year Positive Waterproofing

## Key USPs/Benefits

- ▶ Ultimate waterproofing for terrace and blind walls
- ▶ Heat reduction
- ▶ Europion technology fiber reinforcement
- ▶ 2mm crack bridging
- ▶ Resist up to 7 bar of Hydrostatic pressure
- ▶ Anti-carbonation & Higher whiteness and hiding
- ▶ Resistance to foot traffics

### Damp Proof Fiber Tech



## Problem

Exterior painting with waterproofing

Surface : Exterior

Warranty : 5 year Positive Waterproofing

## Key USPs/Benefits

- ▶ Resist up to 7 bar of hydro statics pressure
- ▶ 600% Elongation
- ▶ Resist up to 3mm Crack bridging
- ▶ Sea Breeze Shield
- ▶ Self Priming

### Damp Proof Silicon Ceramic



We hope the **Paint It Easy Guide** has given you everything you need to know about painting and making your home beautiful.

If you require any further information or advice:



**Scan for  
More Information**